



PO Box 2448 • Henniker, NH 03242  
603-428-3245 • 1-888-PATS PEAK

# Snowshoe Trail Map

**Ski Patrol Direct Line: 603-428-7911**

## Directions to Trail Heads:

### GREEN (EASIEST) TRAIL:



From the lift shack at the base of Bluster follow the green snowshoe markers under the two Valley chair lifts and then up the far side of the ski trail to the pond. The trail head is at the far end of the pond.

### BLUE (INTERMEDIATE) TRAIL:



From the stairs leading up to the balcony proceed to the base of the Hurricane chair lift. Follow the blue markers along the far side of the ski trail. The trail head is on the left just after the chair lift.

### BLACK (EXPERT) TRAIL:



This trail runs between the Green Trail and the Blue Trail at the top of Cascade Basin. It is accessible from either the Green or Blue Trails.

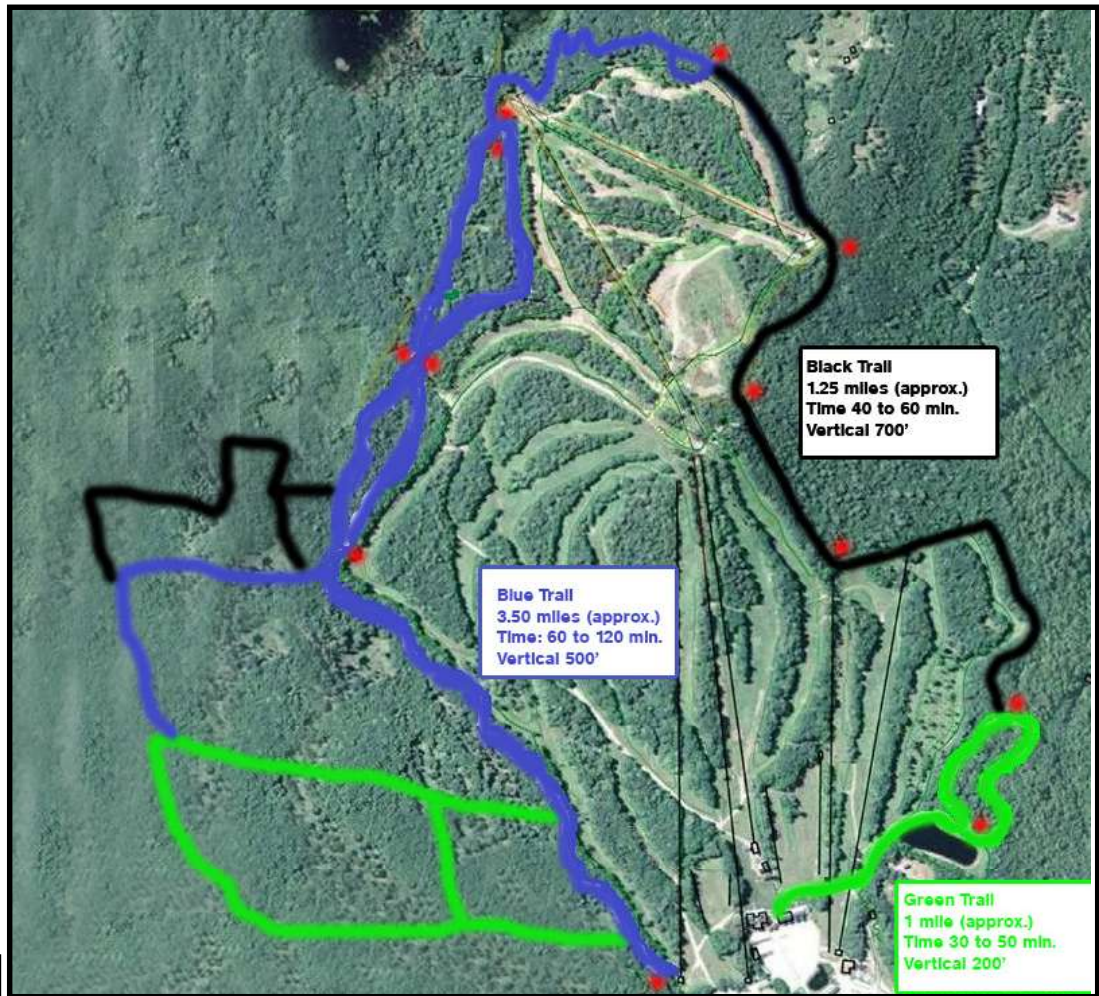
## Finding your way on the trail:

Follow the colored trail markers to guide you along the trail.

### Please follow these simple safety guidelines:

- Tell someone where you plan to go and when you will be back
- Carry a Snowshoe Trail map
- Bring plenty of water
- Dress in layers
- Snowshoe with a partner
- Bring a flashlight
- Please stay on the marked trails

For your safety,  
please stay on the trail.  
*Thank you!*



**Black Trail**  
1.25 miles (approx.)  
Time 40 to 60 min.  
Vertical 700'

**Blue Trail**  
3.50 miles (approx.)  
Time: 60 to 120 min.  
Vertical 500'

**Green Trail**  
1 mile (approx.)  
Time 30 to 50 min.  
Vertical 200'

### IMPORTANT:

Please be aware that Pats Peak does not patrol or maintain these snowshoeing trail. There is no cost to use our snowshoe trails. Remember, our snowshoe trails depend on natural snowfall. Please call in advance for snowshoeing trail conditions at 603-428-3245. The ski area or its employees are not responsible for injuries which occur as a result of the inherent risks associated with the sport of snowshoeing.